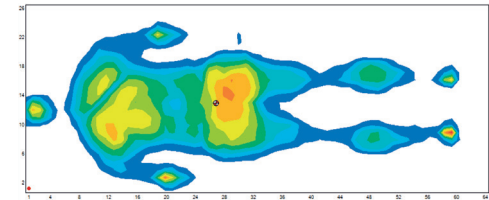


MATTRESS

Satin vert



13 & 15 cm
HEIGHT



Description

CORE High-Resilience polyurethane foam 35, 40 or 55 kg/m³ (bariatric bed)

FABRIC MI polyurethane coated polyester mesh cover, green, 150 g/m², breathability 400 g/m² per 24h.

FINISH Removable cover with a reverse zip fastening down one length and one width.

MAINTENANCE Machine wash at 90°C, tumble dry up to 60° C, use soapy water, very diluted bleach. Do not use ether or fabric softener

TREATMENT antibacterial, anti-dust mite and anti-fungal treated fabric.

FIRE STANDARD Permanent MI fire rated fabric. HR foam M4 fire rated

COMPLIANCE Mattress compliant with GPEM/CP 2005 (standard NF EN597 parts 1 and 2 - recommendation DI 90 GPEM/CP) and with article U23 of January 2005 Class B

COMFORT INDEX Resistance to compression 40% (kPa): 3.4 (35 kg/m³), 3 (40 kg/m³) or 3.7 (55 kg/m³)

CUSTOMER BASE Hospital settings, care homes.

GUARANTEED against premature sagging.

OPTION Class A.

Bevelled corners

Multi-joints.



Option multi-articulated



Density 35 kg/m³



Comfort
★★★★★



Easy care
★★★★★



Durability
★★★★★



Fire resistance
★★★★★



Hygiene
★★★★★

Density 40 kg/m³



Comfort
★★★★★



Easy care
★★★★★



Durability
★★★★★



Fire resistance
★★★★★



Hygiene
★★★★★

